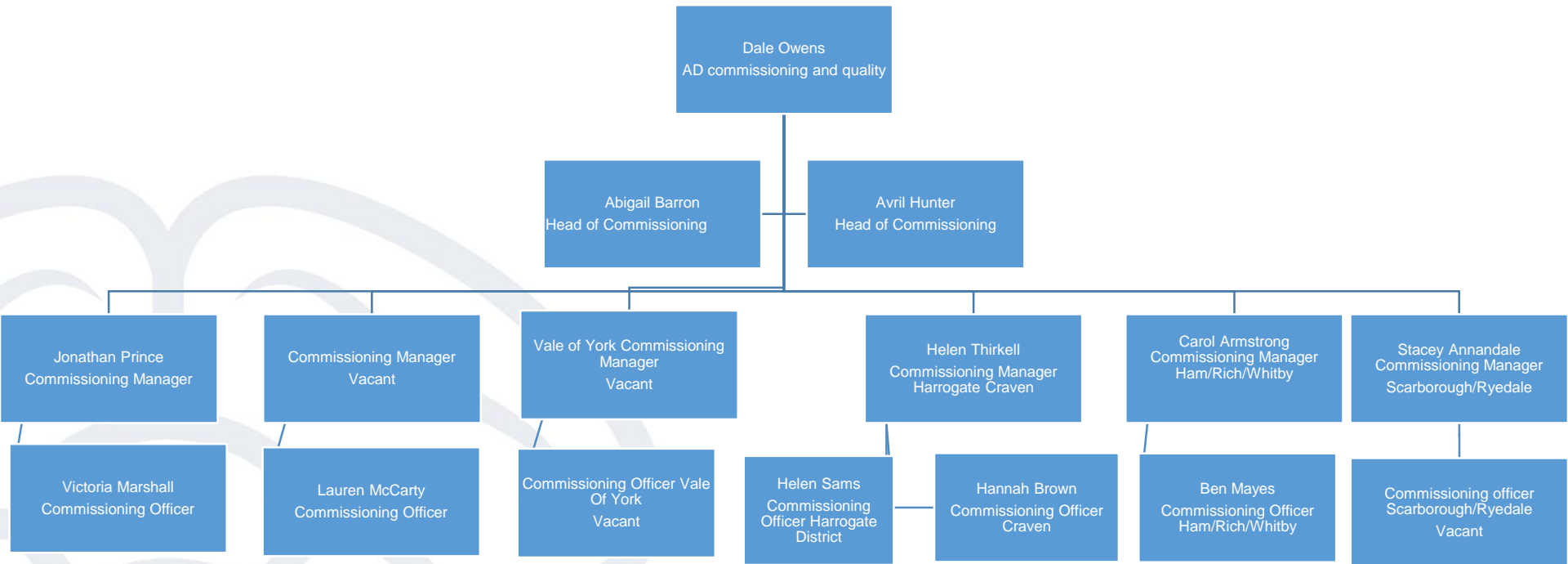


# Commissioning Team



# New Commissioning Structure



# Contact us:

Heads of Commissioning	
Avril Hunter	<a href="mailto:Avril.Hunter@northyorks.gov.uk">Avril.Hunter@northyorks.gov.uk</a>
Abi Barron	<a href="mailto:Abigail.barron@northyorks.gov.uk">Abigail.barron@northyorks.gov.uk</a>
Commissioning Managers	
Stacey Annandale	<a href="mailto:Stacey.Annandale@northyorks.gov.uk">Stacey.Annandale@northyorks.gov.uk</a>
Jonathan Prince	<a href="mailto:Jonathan.prince@northyorks.gov.uk">Jonathan.prince@northyorks.gov.uk</a>
Carol Armstrong	<a href="mailto:Carol.Armstrong@northyorks.gov.uk">Carol.Armstrong@northyorks.gov.uk</a>
Helen Thirkell	<a href="mailto:Helen.Thirkell@northyorks.gov.uk">Helen.Thirkell@northyorks.gov.uk</a>
Vacant	
Vacant	
Commissioning Officers	
Ben Mayes	<a href="mailto:Ben.mayes@northyorks.gov.uk">Ben.mayes@northyorks.gov.uk</a>
Victoria Marshall	<a href="mailto:Victoria.marshall@northyorks.gov.uk">Victoria.marshall@northyorks.gov.uk</a>
Helen Sams	<a href="mailto:Helen.sams@northyorks.gov.uk">Helen.sams@northyorks.gov.uk</a>
Hannah Brown	<a href="mailto:Hannah.3.brown@northyorks.gov.uk">Hannah.3.brown@northyorks.gov.uk</a>
Lauren McCarty	<a href="mailto:Lauren.mccarty@northyorks.gov.uk">Lauren.mccarty@northyorks.gov.uk</a>
Vacant	
Vacant	

# Portfolio Leads

Portfolio	Lead Commissioning Manager	Lead Commissioning Officer
Harrogate Locality	Helen Thirkell	Helen Sams
Craven Locality	Helen Thirkell	Hannah Brown
Hambleton, Richmondshire, Whitby Locality	Carol Armstrong	Ben Mayes
Scarborough and Ryedale Locality	Stacey Annandale	Vacancy 1
Vale of York Locality	Adam Gray	Vacancy 2
Dementia	Carol Armstrong	Victoria Marshall
Mental Health/Advocacy	Stacey Annandale	Vacancy 1
Carers	Adam Gray	Helen Sams/ Lauren McCarty
Autism	Jonathan Prince	Victoria Marshall
Learning Disabilities	Jonathan Prince	Hannah Brown
Supported Living	Jonathan Prince	Hannah Brown/Victoria Marshall
Transitions	Jonathan Prince	Victoria Marshall
Prevention & Wellbeing	Adan Gray	Vacancy 2
TCP	Helen Thirkell	Hannah Brown
Market Development & Sustainability	Helen Thirkell	Ben Mayes/Helen Sams
Discharge Pathways	Vacancy	Lauren McCarty
Team monitoring and Comms		Lauren McCarty
Strategic Integration	Vacancy	Ben Mayes/Lauren McCarty/Helen Sams

# Commissioning Vision

We want to make sure that we have services in place that:

- Ensure people can maximise their strengths to maintain independence and self support
- Deliver better outcomes for people
- Improve health and wellbeing
- Develop a sustainable workforce
- Make best use of technology
- Support and protect vulnerable people
- Give people choice and control
- Provide good value for money

# Principles we work by

- **People** are truly at the heart of what we do, ensuring services are inclusive and equitable
- **Place** as a focus, encouraging place-based care and local innovation with strong local relationships
- **Population** to identify strengths and skills of local communities to address the wider determinants of poor health
- **Transformation** is embedded to continuously raise the ambition that drives improvement by creating an 'engine room' for innovation across health and adult services
- **Co-production** enabling an equal partnership between people who use services, carers and wider stakeholders
- **Efficient** use of people and finances to ensure that we spend the money carefully and find the right way to deliver services
- **Integration** with stakeholders and health colleagues to ensure services are built around people rather than around organisational structures

# Our Commissioning Cycle....not just a procurement process!



# Our Strategic Objectives - Commissioning

- Develop locality knowledge and relationships to inform locality commissioning plan based on needs and outcomes
- Carry out strategic reviews of commissioned services following the principles of Integrated Commissioning for Better Outcomes and in a timely manner to meet deadlines
- Monitor effective implementation and review of Health and Wellbeing Board and Health and Adult Services Strategies
- Proactive approach to Transforming Care Partnership
- Develop relationships with partners to enhance opportunities for joint commissioning and better outcomes



Every adult has a longer, healthier and independent life

We are a modern council which puts our customers at the heart of what we do

## Health and Adult Services - Commissioning Plan on a Page 2019/20

North Yorkshire is a place with a strong economy and

commitment to sustainable growth enabling citizens to fulfil their ambitions & aspirations

*People living longer, healthier, independent lives*

Objective

Locality knowledge & relationships to inform locality plans based on needs & outcomes

- Build knowledge base of localities and map resources with plan on a page
- Develop and maintain relationships with partners
- Review intelligence and unsourced packages of care with proactive development plan
- Develop provider drop in sessions
- Locality engagement to support strategic reviews

Strategic review of commissioned services following Commissioning for Better Outcomes

- Input into SBA Phase 2
- Implement micro - enterprise Ryedale
- Strategic review of
  - respite/carer offer
  - Advocacy
  - MH Support line
  - Home from hospital
- Collaboration agreement with district/borough councils
- Dom Care framework
- Develop transformative model for supported living
- Effective monitoring of commissioned services

Implementation and review of Health and Adult Services Strategies

- Implementation of H&WBB Strategies:
  - Bring me Sunshine
  - Live Well Live Longer
  - Hope Choice and Control
  - Caring for Carers
  - Autism
- NYCC dementia friendly employer status
- Contribute to JSNA for:
  - Public Mental Health
  - Autism
  - Learning Disabilities
- Strategic review of carers
- Develop options for future Autism strategy
- Engagement mechanism for Carers & Mental Health

Transforming Care Partnership

- Contribute to TCP engine room
- Development of engagement workstream
- Implementation of RPIW actions
- Promote, train staff and roll out regional Framework Agreement
- Representation at enhanced community housing offer workstream
- Proactive management of HAS TCP
- Understand the impact of transitions and develop governance structure to inform future planning

Develop relationships with partners to enhance opportunities for joint commissioning

- Review of joint commissioned services with CCGs
- Review CCG commissioning intentions to make strategic links
- Redefine shared values and priorities with Joint Commissioning Boards
- Assessment of BCF/IBCF
- Identify joint working opportunities
- Develop commissioning strategy
- Implement DTA countywide
- Lead locally base strategic programmes with CCGs

Enable independence & self-support

Deliver better outcomes

Improve health and wellbeing

Care for the workforce

Make best use of technology

Support and protect vulnerable people

Give people choice and control

Provide good value for money

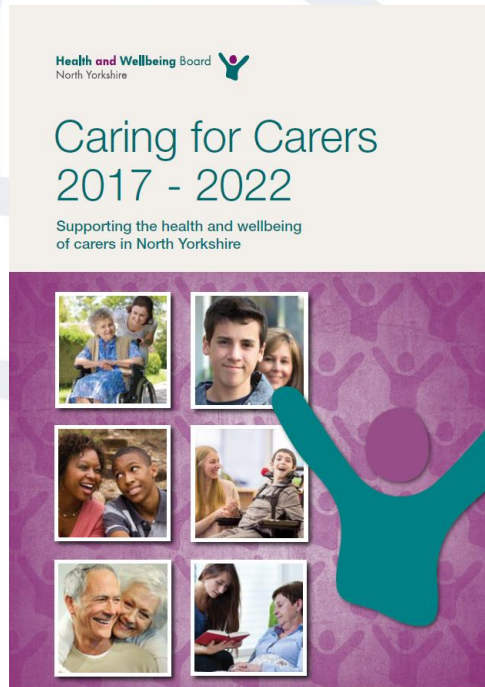
# Commissioning Strategies:



# Caring for Carers

## Vision

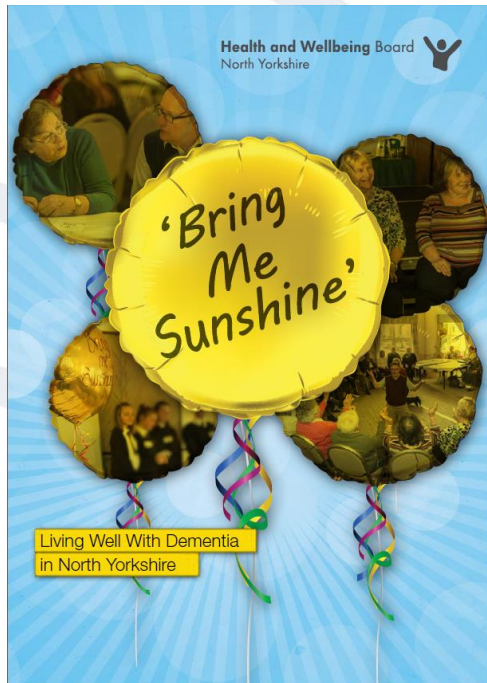
Carers themselves can live long and healthy lives and be able to continue to care as long as possible and as long as they would want to. We want to encourage more carer friendly communities, and promote carer issues across wider society.



# Bring Me Sunshine – Dementia Strategy

## Vision

This strategy brings together organisations from across Health and Social Care and the Voluntary Sector to speak with one voice on our aspirations for making North Yorkshire a place where people can live well with dementia.





# Live Well, Live Longer – Learning Disabilities Strategy

## Vision

People with a learning disability should have the opportunity to live long and healthy lives. They should be supported to exercise choice in their daily lives, feel happy, safe and supported, be active and fulfil their potential, enjoy the best health and wellbeing possible and, be respected and treated with dignity



# Changing the landscape of autism in North Yorkshire

## Vision

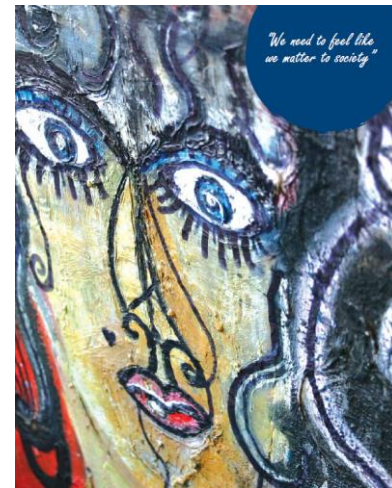
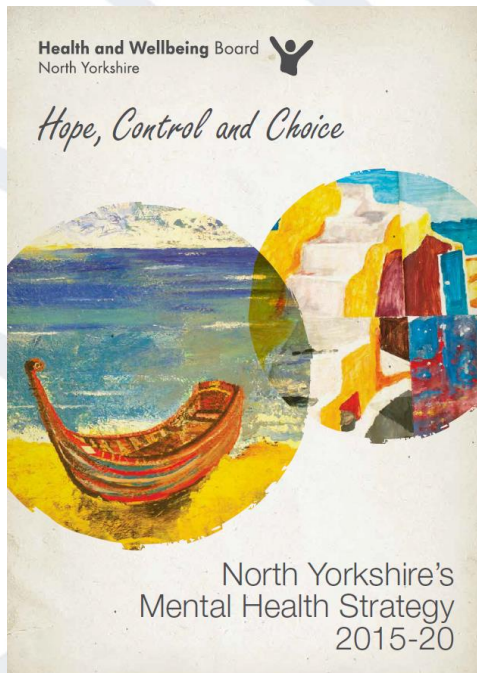
People with autism see things differently, and we want to see North Yorkshire as an 'autism friendly' place, so that this unique perspective is a welcome part of the local community, and that people with autism can contribute fully to local life, through education, employment opportunities and support for families.



# Hope, Control and Choice – Mental Health Strategy

## Vision

We will work together to ensure the people of North Yorkshire have the resilience to enjoy the best possible mental health, and to live their lives to their full potential, whatever their age and background, supported by effective, integrated and accessible services across all sectors, designed in genuine partnership with the people who need to make use of them and those who care for them



# Commissioning News

- Strength Based Assessments Phase 2
- Autism Engagement
- Carers
- New Dementia provider in some areas



# Workshop and Peer support session

## Questions:

1. What would providers like these events to be like going forward? Guest speakers? A market place event where providers share their good practice?
2. How can we co-produce these events in the future?

