

# Turning stories into action

Sam Hayes

PLACED

OFFICIAL



# Why stories?

- We can relate to stories
- We can connect with experiences and real life
- We can look beyond our immediate role or work
- We can be more holistic and honest

# What stories?

We've asked our storytellers to...

**“tell us a story about collaboration  
which delivered improvements  
for communities and places.”**



# David Sharp – North Yorkshire Youth



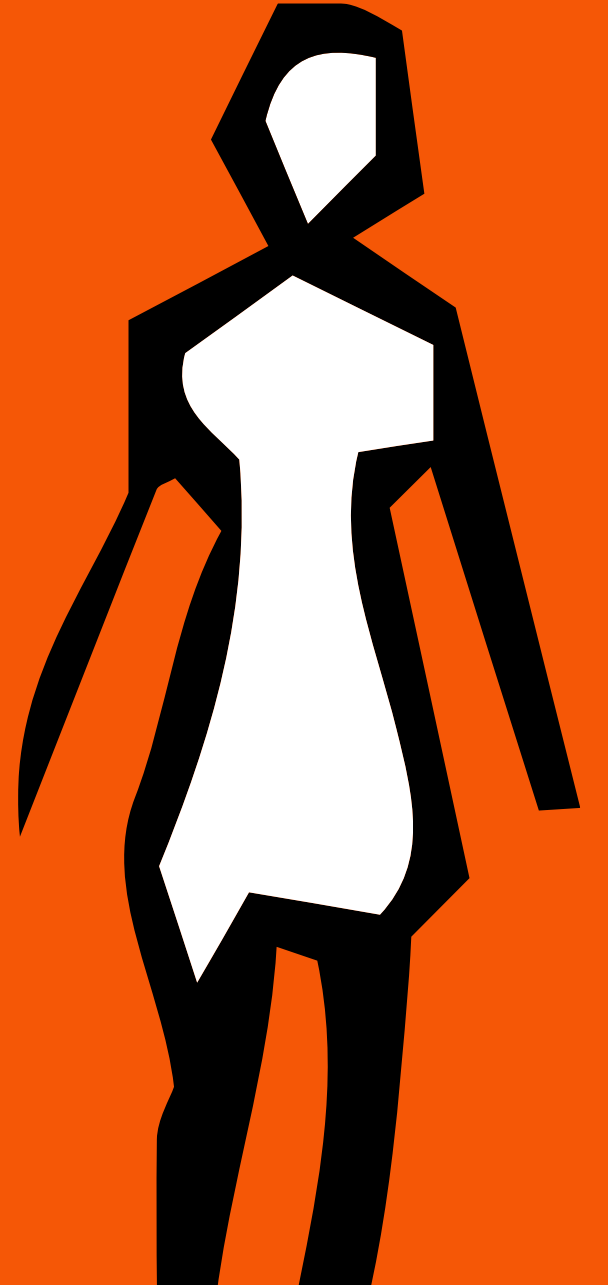








# Charlotte McEvoy – Chain Lane Community Hub





# THRIVING KNARESBOROUGH

OUR VISION  
for 2030



ARCHAEOLOGY PROJECTS  
WHAT A CREATIVE PLACE!



KNARESBOROUGH MUSEUMS

SUPPORTING LOCAL CREATIVES

ARTS, CULTURE



LOVE OF OUR TOWN AND EACH OTHER



AFFORDABLE/ECO SOCIAL HOUSING



HOUSING

HEALTH, WELLBEING

COMMUNITY AMBASSADORS - DEPRESSION/ANXIETY SUPPORT

AN OPEN WELLBEING SPACE



GUERRILLA GARDENING IN TOWN

WELCOMING

VIBRANT COMMUNITY HUBS

LOCAL CARE SERVICE

SHARING RESOURCES, COOKING, HEATING



BLIND JACK



SAINT ROBERT



CLIFF LIFT



GREEN CONNECTORS



ENVIRONMENTAL SUSTAINABILITY

TECH PARK

ECONOMIC DEVELOPMENT

TRAINING AND SKILLS FOR BUSINESS

LOCAL ENERGY COMPANY

HYDRO POWER



GREEN GROWTH



INVESTMENT

VISITOR ECONOMY



OLD MOTHER SHIPTON



THRIVING COMMUNITY

INDEPENDENT SHOPS  
MARKETS  
STREET ENHANCEMENT  
ACCESSIBILITY  
GREENING THE STREETS



FOOLISH WOOD

ARTWORK: TWO VISUAL THINKERS INFO



GIVE LOCAL PEOPLE A VOICE AND RESOURCES  
Knaresborough Voice



YOUNG PEOPLE

FREE, WEEKLY ACTIVITIES

BOWLING ALLEY

COFFEE BAR, COMMON ROOM

OUTREACH WORKER



INTEGRATED TRANSPORT



Existing link with King James School and Inspire Youth Yorkshire

Workshop with young people

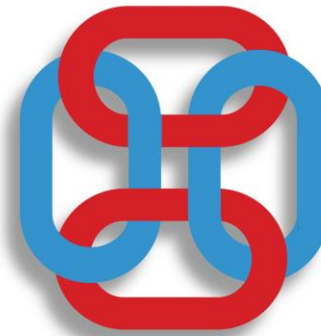
Applied to UKSPF

Relied on School and Inspire Youth Yorkshire

Artist and Videographer

Better Connect support – Data

Report – Sharing approach, findings and project design



Chain Lane  
Community  
Hub





Contributors:

JESSICA PICKARD  
SULDRUN WHITE  
AIDAN LOWE  
SOPHIA CARREIRA  
LILY VAUGHAN  
ZARANA GILTHORPE  
RUFUS CRUMP  
HAZEL BRODIE  
HATTIE RILEY-SCOTT  
BOBBY MACDOUGALL  
XANTHE RAWSON  
HARRY ATKINSON  
CATHEN PINTO  
EMILY DZIDA  
KATIE O'DONNELL  
MAISIE F



SUPPORT



WELL-BEING



Artwork:twovizthink.com

Community and BELONGING

YOUNG & OLD  
SKILL SHARE



LITTER PICKING  
ACTIVITIES

BIG, FREE CAR PARK  
WITH NUMBERED BAYS  
AND BUS STOP



FREE GYM/SWIMMING -  
UNDER 18'S



FREE FRUIT 'N  
VEG STALLS -  
UNDER 18'S

SPORTS  
EQUIPMENT



Health



SUNFLOWER  
COMPETITION

JOB OPPORTUNITIES/  
WORK EXPERIENCE

NO GUM  
SPITTING



MORE SUPPORT FOR  
MENTAL HEALTH &  
PHYSICAL HEALTH  
FOR YOUNG  
PEOPLE



DANCE  
CLASSES



MORE RECYCLING/  
DOG POO BINS

SINGLE USE  
PLASTIC



GARDENING  
CLUBS



MORE TREES/  
GREEN ENERGY

MORE ELECTRIC  
CHARGING POINTS

MORE PUBLIC  
GREENER TRANSPORT

BEE-FRIENDLY  
FLOWERS

MORE BIKES  
FEWER CARS

CLEAN THE RIVER!



NATURE  
CLUBS

GREEN  
ROOFS



ENVIRONMENT

Social life. HAPPINESS,  
FULFILLMENT

LIFE SKILLS  
CLASSES  
ARTS/CRAFTS  
MUSIC YOGA  
POLITICS

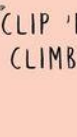


CHEAPER  
SCOUTS/  
CUBS/  
GUIDES



TRAMPOLINE  
PARK

ICE SKATING  
RINK



GAMES  
CAFE



FREE  
BIKES/SCOOTERS-  
APP, SCAN, GO!



DRINKING WATER  
FOUNTAIN



FREE WI-FI



A  
ZOO



A  
MAZE



EMERGENCY  
STREET PHONE

MORE STREET/  
RIVER LIGHTS

MORE  
STREETLIGHTS



CYCLE PATHS/  
WIDER WALKWAYS

SELF-  
DEFENCE  
CLASSES



SAFETY

**Over to you...**





# **Building collaboration**

- 1. Reflecting on the stories and your own experiences chat with your neighbour thinking about:**
  - a) Barriers to collaboration**
  - b) Actions to enable collaboration**
  - c) Your own reflections on collaboration**
- 2. Write your response to A, B and C on your building block.**



COMMISSIONING  
STRAT COMMISSIONING

COMMISSIONING  
COMMISSIONING

COMMISSIONING  
COMMISSIONING

COMMISSIONING  
COMMISSIONING

COMMISSIONING  
COMMISSIONING

COMMISSIONING  
COMMISSIONING

COMMISSIONING  
COMMISSIONING

COMMISSIONING  
COMMISSIONING

COMMISSIONING  
COMMISSIONING

COMMISSIONING  
COMMISSIONING

COMMISSIONING  
COMMISSIONING

COMMISSIONING  
COMMISSIONING

COMMISSIONING  
COMMISSIONING

COMMISSIONING  
COMMISSIONING

COMMISSIONING  
COMMISSIONING

COMMISSIONING  
COMMISSIONING

COMMISSIONING  
COMMISSIONING

COMMISSIONING  
COMMISSIONING

COMMISSIONING  
COMMISSIONING

TAX THE RICH

COMMISSIONING  
COMMISSIONING

COMMISSIONING  
COMMISSIONING

COMMISSIONING  
COMMISSIONING

COMMISSIONING  
COMMISSIONING

COMMISSIONING  
COMMISSIONING

COMMISSIONING  
COMMISSIONING

COMMISSIONING  
COMMISSIONING

COMMISSIONING  
COMMISSIONING

COMMISSIONING  
COMMISSIONING

COMMISSIONING  
COMMISSIONING

COMMISSIONING  
COMMISSIONING

COMMISSIONING  
COMMISSIONING

COMMISSIONING  
COMMISSIONING

COMMISSIONING  
COMMISSIONING

COMMISSIONING  
COMMISSIONING

COMMISSIONING  
COMMISSIONING

COMMISSIONING  
COMMISSIONING

COMMISSIONING  
COMMISSIONING

COMMISSIONING  
COMMISSIONING

COMMISSIONING  
COMMISSIONING

COMMISSIONING  
COMMISSIONING

COMMISSIONING  
COMMISSIONING

COMMISSIONING  
COMMISSIONING

COMMISSIONING  
COMMISSIONING

COMMISSIONING  
COMMISSIONING

COMMISSIONING  
COMMISSIONING

COMMISSIONING  
COMMISSIONING

COMMISSIONING  
COMMISSIONING

COMMISSIONING  
COMMISSIONING

COMMISSIONING  
COMMISSIONING

COMMISSIONING  
COMMISSIONING

COMMISSIONING  
COMMISSIONING

COMMISSIONING  
COMMISSIONING

COMMISSIONING  
COMMISSIONING

COMMISSIONING  
COMMISSIONING

COMMISSIONING  
COMMISSIONING

COMMISSIONING  
COMMISSIONING

COMMISSIONING  
COMMISSIONING

COMMISSIONING  
COMMISSIONING

COMMISSIONING  
COMMISSIONING

COMMISSIONING  
COMMISSIONING

COMMISSIONING  
COMMISSIONING

COMMISSIONING  
COMMISSIONING

COMMISSIONING  
COMMISSIONING

COMMISSIONING  
COMMISSIONING

COMMISSIONING  
COMMISSIONING

COMMISSIONING  
COMMISSIONING

COMMISSIONING  
COMMISSIONING

COMMISSIONING  
COMMISSIONING

COMMISSIONING  
COMMISSIONING

COMMISSIONING  
COMMISSIONING

COMMISSIONING  
COMMISSIONING

COMMISSIONING  
COMMISSIONING

COMMISSIONING  
COMMISSIONING

COMMISSIONING  
COMMISSIONING

COMMISSIONING  
COMMISSIONING

COMMISSIONING  
COMMISSIONING

COMMISSIONING  
COMMISSIONING

COMMISSIONING  
COMMISSIONING

COMMISSIONING  
COMMISSIONING

COMMISSIONING  
COMMISSIONING

COMMISSIONING  
COMMISSIONING

COMMISSIONING  
COMMISSIONING

COMMISSIONING  
COMMISSIONING

COMMISSIONING  
COMMISSIONING

COMMISSIONING  
COMMISSIONING

COMMISSIONING  
COMMISSIONING

COMMISSIONING  
COMMISSIONING

# Thank You!

**Sam@placed.org.uk**  
**placed.org.uk**

**Come and find us at our stand**

**PLACED**

OFFICIAL

